



## ***Tilts***



- 83" MANUAL TILT (TM)
- 83" HYDRAULIC QUICK TILT (TH)
- 5" CHANNEL TILT (T5)
- 6" CHANNEL EQUIPMENT TILT (T6)
- POWERED FULL TILT (TF)
- MULTIDECK TILT (MT)
- DECKOVER TILT (T8)
- HD DECKOVER TILT (T9)
- TANDEM DUAL TILT (TD)



# 83" Manual Tilt (TM)

# TM



**Lengths**  
16', 18', & 20'

20 ft 83" Quick Tilt Pictured

## Standard Features

- 7,000 lb. G.V.W.R.
- 3,500 lb. x 2 G.A.W.R.
- 2 5/16" Adjustable Ball Coupler
- Safety Chains
- 1 - Top Wind Drop-Leg Jack (8,000 lb.)
- 2 - Posi-lube Axles, Idler & Brake (3,500 lb.)
- 4 Leaf Double-eye Spring Suspension
- 4 - 15" White Spoke Wheels
- 4 - NEW ST205/75R15 Radial Tires (1,820 lb.)
- Electric Breakaway Kit w/ Charger
- 9" x 72" Treadplate Aluminum Fenders
- Manually Operated Tilting Jack (3 Ton)
- 5" Channel Frame & Tongue
- 3" Channel Crossmembers 16" on Center
- 2" Treated Pine Lumber Deck
- 83" Wide Deck
- DOT Approved Flushmount Lifetime LED Lights
- Sealed Wire Harness
- Sand Blasted, Acid Washed, Powder Coated
- Stake Pockets

**POWDER COATED**

At PJ Trailers, every trailer we build is powder coated with Sherwin-Williams™ Powder Coat. A powder coat finish is far superior to conventional paint. It is extremely durable and does not easily crack, chip, or peel as conventional paint does. Powdercoating also helps prevent rust & corrosion making it the longest lasting and most durable finish on the market.

## Coupler Options

- BP 2 5/16" Adjustable \*
- BP 2" A-Frame
- BP 2 5/16" A-Frame
- BP 2" Adjustable
- 3" Pintle Eye - Channel-mount

## Axle Options

- (2) 3,500# One Electric / Drop Axle
- (2) 3,500# One Electric / Spring \*
- (2) 3,500# Electric / Drop Axle
- (2) 3,500# Electric / Spring
- (2) 5,200# One Electric / Spring
- (2) 5,200# Electric / Spring

## Tail Options

- Tilt Deck \*

## Color Options

- Black Powdercoat \*
- Equipment Yellow Powdercoat
- Grey Powdercoat
- Red Powdercoat
- Regatta Blue Powdercoat
- Tractor Green Powdercoat
- White Powdercoat

## Other Options

- Plate for Winch
- Upgrade to 235/80 R16 on 52k Axles
- 2 D-Rings
- Steel Diamond Plate Fenders
- Rubrail
- Steel Floor w/ 4 D-Rings
- Spare Tire Mount
- Spare Tire and Mount

## Notes

- 16' Trailer Drop Axles Recommended

\* denotes a standard feature

## Weights

Length	Axles	Est. Base Weight:
16'	2 - 3,500	2020 lbs / 916 kg
18'	2 - 3,500	2120 lbs / 962 kg
20'	2 - 3,500	2220 lbs / 1007 kg

† Weights are estimated for base trailer only, PJ Trailers makes no guarantee regarding the accuracy of estimated weights



# 83" Hydraulic Quick Tilt (TH)

# TH



**Lengths**  
16', 18', & 20'

20 ft 83" Hydraulic Quick Tilt Pictured

## Standard Features

- 7,000 lb. G.V.W.R.
- 3,500 lb. x 2 G.A.W.R.
- 2 5/16" Adjustable Ball Coupler
- Safety Chains
- 1 - Top Wind Drop-Leg Jack (8,000 lb.)
- 2 - Posi-lube Axles, Idler & Brake (3,500 lb.)
- 4 Leaf Double-eye Spring Suspension
- 4 - 15" White Spoke Wheels
- 4 - NEW ST205/75R15 Radial Tires (1,820 lb.)
- Electric Breakaway Kit w/ Charger
- 9" x 72" Treadplate Aluminum Fenders
- 5" Channel Frame & Tongue
- 3" Channel Crossmembers 16" on Center
- 2" Treated Pine Lumber Deck
- 83" Wide Deck
- DOT Approved Flushmount Lifetime LED Lights
- Sealed Wire Harness
- Sand Blasted, Acid Washed, Powder Coated
- Stake Pockets



At PJ Trailers, every trailer we build is powder coated with Sherwin-Williams™ Powder Coat. A powder coat finish is far superior to conventional paint. It is extremely durable and does not easily crack, chip, or peel as conventional paint does. Powdercoating also helps prevent rust & corrosion making it the longest lasting and most durable finish on the market.

## Coupler Options

- BP 2 5/16" Adjustable \*
- BP 2" A-Frame
- BP 2 5/16" A-Frame
- BP 2" Adjustable
- BP 2" Atwood Style A-Frame Coupler
- BP 2 5/16" Atwood Style A-Frame Coupler
- 3" Pintle Eye - Channel-mount

## Axle Options

- (2) 3,500# One Electric / Drop Axle
- (2) 3,500# One Electric / Spring \*
- (2) 3,500# Electric / Drop Axle
- (2) 3,500# Electric / Spring
- (2) 5,200# One Electric / Spring
- (2) 5,200# Electric / Spring

## Tail Options

Tilt Deck \*

## Color Options

- Black Powdercoat \*
- Equipment Yellow Powdercoat
- Grey Powdercoat
- Red Powdercoat
- Regatta Blue Powdercoat
- Tractor Green Powdercoat
- White Powdercoat

## Other Options

- Plate for Winch
- 2 Stake Pockets In Front of Trailer
- 2 D-Rings
- Steel Diamond Plate Fenders
- 2" Pipetop Removable Siderails
- Rubrail
- Steel Floor w/ 4 D-Rings
- Spare Tire Mount
- Spare Tire and Mount
- 16" oc Crossmembers

## Notes

16' Trailer Drop Axles Recommended  
MAX GVWR 10,400 with Correct Options

\* denotes a standard feature

## Weights

Length	Axles	Est. Base Weight;
16'	2 - 3,500	2170 lbs / 984 kg
18'	2 - 3,500	2270 lbs / 1030 kg
20'	2 - 3,500	2370 lbs / 1075 kg

† Weights are estimated for base trailer only, PJ Trailers makes no guarantee regarding the accuracy of estimated weights



20 ft 83" Hydraulic Quick Tilt Front View



## 5" Channel Tilt (T5)

# T5



**Lengths**  
16', 18' & 20'

20 ft 5" Channel Tilt (T5) Pictured (4' Stationary Deck + 16' Tilt)

### Standard Features

- 7,000 lb. G.V.W.R.
- 3,500 lb. x 2 G.A.W.R.
- 2" Ball Coupler
- Safety Chains
- 1 - Side Wind Drop-Leg Jack (8,000 lb.)
- 2 - Posi-lube Axles, Idler & Brake (3,500 lb.)
- 4 Leaf Double-eye Spring Suspension
- 4 - 15" White Spoke Wheels
- 4 - NEW ST205/75R15 Rad. Tires (1820 lb)
- Electric Breakaway Kit w/ Charger
- 9" x 72" Treadplate Aluminum Fenders
- 11 Degree Tilt Pitch
- 3 Ton Double-Action Lift Cylinder
- 5" Channel Frame & Tongue
- 3" Channel Crossmembers 24" on Center
- 2" Treated Pine Lumber Deck
- 83" Wide Deck
- 75" Wide Tilttable Deck
- Sealed Wire Harness
- Sand Blasted, Acid Washed, Powder Coated
- DOT Approved Flushmount Lights

**POWDER COATED**

At PJ Trailers, every trailer we build is powder coated with Sherwin-Williams™ Powder Coat. A powder coat finish is far superior to conventional paint. It is extremely durable and does not easily crack, chip, or peel as conventional paint does. Powdercoating also helps prevent rust & corrosion making it the longest lasting and most durable finish on the market.

### Coupler Options

BP 2 5/16" Adjustable \*  
3" Pintle Eye - Channel-mount

### Axle Options

(2) 3,500# One Electric / Spring  
(2) 3,500# Electric / Spring \*  
(2) 5,200# One Electric / Spring  
(2) 5,200# Electric / Spring

### Tail Options

Tilt Deck \*

### Color Options

Black Powdercoat \*  
Equipment Yellow Powdercoat  
Grey Powdercoat  
Red Powdercoat  
Regatta Blue Powdercoat  
Tractor Green Powdercoat  
White Powdercoat

### Other Options

Bias Ply Tires  
1 Pair D-Rings  
Diamond Plate Fenders  
Smooth Steel Fenders  
Steel Floor w/ 4 D-Rings  
Spare Tire Mount  
Spare Tire and Mount  
16" oc Crossmembers  
No Tires & Wheels

\* denotes a standard feature

## Weights

Length	Axles	Est. Base Weight;
16'	2 - 3,500	2440 lbs / 1107 kg
18'	2 - 3,500	2540 lbs / 1152 kg
20'	2 - 3,500	2720 lbs / 1234 kg

† Weights are estimated for base trailer only, PJ Trailers makes no guarantee regarding the accuracy of estimated weights



# 6" Channel Equipment Tilt (T6)

# T6



**Lengths**  
16', 18', 20',  
22', & 24'

**POWER UP  
& DOWN  
AVAILABLE**

20 ft 6" Channel Tilt (T6) Pictured (4' Stationary Deck + 16' Tilt)

## Standard Features

- 14,000 lb. G.V.W.R.
- 7,000 lb. x 2 G.A.W.R.
- 2 5/16" Adjustable Ball Coupler
- Safety Chains
- 1 - Drop Leg Jack (10,000 lb.)
- 2 - Posi-lube Brake Axles (7,000 lb.)
- Torsion Suspension
- 4 - 16" White Spoke Wheels
- 4 - 235/80R16 Radial Tires (3,520 lb.)
- Stake Pockets & Rubrail
- Electric Breakaway Kit w/ Charger
- 9" x 72" Treadplate Removable Steel Fenders
- 11 Degree Tilt Pitch
- 3" x 16" Cylinder
- 6" Channel Frame & Tongue

- 3" Channel Crossmembers 16" on Center
- 2" Treated Pine Lumber Deck
- 74" Wide Tilttable Deck
- 82" Between Fenders
- DOT Approved Flushmount Lifetime LED Lights
- Sealed Wire Harness
- Sand Blasted, Acid Washed, Powder Coated

**POWDER COATED**

At PJ Trailers, every trailer we build is powder coated with Sherwin-Williams™ Powder Coat. A powder coat finish is far superior to conventional paint. It is extremely durable and does not easily crack, chip, or peel as conventional paint does. Powdercoating also helps prevent rust & corrosion making it the longest lasting and most durable finish on the market.

## Coupler Options

BP 2 5/16" Adjustable \*  
Rigid mount 2-5/16 (25,000 lb.)  
GN 2 5/16" Round (30,000 lb.) w/ Toolbox  
GN Load-Leveling 2 5/16" Square (30,000 lb.) Tbx  
3" Pintle Eye - Channel-mount (21,000 lb.)  
GN 2 5/16" Square (30,000 lb.) w/ Toolbox  
GN 2 5/16" Round (25,000 lb.) w/ Toolbox  
GN 2 5/16" Square (25,000 lb.) w/ Toolbox

## Axle Options

(2) 7,000# Electric / Torsion \*  
(2) 7,000# Hydraulic Drum / Torsion  
(2) 7,000# Elec/Hyd Disk / Torsion  
(2) 7,000# Surge Disk / Torsion  
(2) 7,000# Surge/ Hydraulic Drum / Torsion  
(3) 7,000# Electric / Torsion  
(2) 7,000# Dexter Electric / Torsion  
(2) 7,000# Load Range G 14ply Tires Electric / Tors  
(2) 7,000# Ld Rng. G 14ply Tires Elec/Hyd Disk/Tors  
(3) 7,000# Load Range G 14ply Tires Electric / Tors

## Tail Options

16' Tilt Deck \*

## Color Options

Black Powdercoat \*  
Equipment Yellow Powdercoat  
Grey Powdercoat  
Red Powdercoat  
White Powdercoat

## Other Options

Cold Weather Wiring Harness (7-Way RV)  
Plate for Winch  
6" Taller GN Riser  
Douglas Fir Lumber  
9,990 G.V.W.R.  
12" oc Crossmembers  
1 Pair D-Rings  
Rough Oak Floor  
Weld-On Strap Ratchets (2)  
2nd Jack (Bumper Pull)  
Power up Power down Tilt  
Mount Only for Spare Tire  
Steel Floor & 4 D-Rings  
Front Toolbox (Bumper Pull & Pintle)  
Spare Tire and Mount (Bumper Pull)  
Deck on the Neck (GN Only)  
Winch 12VDC (12,000 lb.) Incl. Front Toolbox  
2-speed Jack (12,000 lb.)  
Roller on Front of Deck for Winch Cable

## Notes

T6 trailers over 16 ft in length will have a stationary front deck. For full length tilt see the Powered Full Tilt (TF)

\* denotes a standard feature

## Weights

Length	Axles	Est. Base Weight†
16'	2 - 7,000	3060 lbs / 1388 kg
18'	2 - 7,000	3240 lbs / 1470 kg
20'	2 - 7,000	3420 lbs / 1551 kg
22'	2 - 7,000	3600 lbs / 1633 kg
24'	2 - 7,000	3780 lbs / 1715 kg

†Weights are estimated for base trailer only, PJ Trailers makes no guarantee regarding the accuracy of estimated weights



AIR RIDE SUSPENSION AVAILABLE



Gooseneck Coupler Available



# Powered Full Tilt (TF)

# TF



**Lengths**  
18' - 24'

**POWER UP  
& DOWN**

22 ft Powered Full Tilt (TF) Pictured

## Standard Features

- 14,000 lb. G.V.W.R.
- 7,000 lb. x 2 G.A.W.R.
- 2 5/16" Adjustable Ball Coupler
- Safety Chains
- 1 - Drop Leg Jack (10,000 lb.)
- 2 - Posi-lube Brake Axles (7,000 lb.)
- Torsion Suspension
- 4 - 16" White Spoke Wheels
- 4 - 235/80R16 Radial Tires (3,520 lb.)
- Stake Pockets & Rubrail
- Electric Breakaway Kit w/ Charger
- 9" x 72" Treadplate Removable Steel Fenders
- 6" Channel Frame & Tongue
- 3" Channel Crossmembers 16" on Center
- 2" Treated Pine Lumber Deck
- 74" Wide Tilttable Deck
- 82" Between Fenders

- DOT Approved Flushmount Lifetime LED Lights
- Sealed Wire Harness w/ 7-Way RV Plug
- Sand Blasted, Acid Washed, Powder Coated
- Hydraulic Power Up & Down w/ 2 3" X 16" Cylinders
- Interstate (TM) Deep Cycle Battery



At PJ Trailers, every trailer we build is powder coated with Sherwin-Williams™ Powder Coat. A powder coat finish is far superior to conventional paint. It is extremely durable and does not easily crack, chip, or peel as conventional paint does. Powdercoating also helps prevent rust & corrosion making it the longest lasting and most durable finish on the market.

## Weights

Length	Axles	Est. Base Weight:
18'	2 - 7,000	3420 lbs / 1551 kg
20'	2 - 7,000	3680 lbs / 1669 kg
22'	2 - 7,000	4000 lbs / 1814 kg
24'	2 - 7,000	4560 lbs / 2068 kg

† Weights are estimated for base trailer only, PJ Trailers makes no guarantee regarding the accuracy of estimated weights



AIR RIDE SUSPENSION AVAILABLE



## Coupler Options

- BP 2 5/16" Adjustable (14,000 lb.) \*
- Rigid mount 2-5/16 (25,000 lb.)
- GN 2 5/16" Round (30,000 lb.) w/ Toolbox
- GN Load-Leveling 2 5/16" Square (30,000 lb.) Tbx
- 3" Pintle Eye - Channel-mount (21,000 lb.)
- GN 2 5/16" Square (30,000 lb.) w/ Toolbox
- GN 2 5/16" Round (25,000 lb.) w/ Toolbox
- GN 2 5/16" Square (25,000 lb.) w/ Toolbox

## Axle Options

- (2) 7,000# Electric / Torsion \*
- (2) 7,000# Hydraulic Drum (1000 PSI Pump) / Torsion
- (2) 7,000# Elec/Hyd Disk (1,600 PSI Pump) / Torsion
- (2) 7,000# Surge Disk / Torsion
- (2) 7,000# Surge/ Hydraulic Drum / Torsion
- (2) 7,000# Dexter Electric / Torsion
- (2) 7,000# Load Range G 14ply Tires Electric / Torsion
- (2) 7,000# Load Range G 14ply Tires Elec/Hyd Disk (1,600 PSI Pump) / Torsion

## Tail Options

Tilt Deck \*

## Color Options

- Black Powdercoat \*
- Equipment Yellow Powdercoat
- Grey Powdercoat
- Red Powdercoat
- White Powdercoat

## Other Options

- Cold Weather Wiring Harness (7-Way RV)
- Plate for Winch
- Solar Battery Charger
- 6" Taller GN Riser
- Douglas Fir Lumber
- 8" Channel Upgrade
- 9,990 G.V.W.R.
- Battery Charger 12V
- 1 2" oc Crossmembers
- 1 Pair D-Rings
- Rough Oak Floor
- Weld-On Strap Ratchets (2)
- 2nd Jack (Bumper Pull)
- Mount Only for Spare Tire
- 1 1ga Diamond Plate Steel Floor & 4 D-Rings
- Spare Tire and Mount (Bumper Pull)
- Deck on the Neck (GN Only)
- Winch 12VDC (12,000 lb.) Incl. Front Toolbox
- 2-speed Jack (12,000 lb.)
- Roller on Front of Deck for Winch Cable

## Notes

- 24' and Longer Comes with 8" Channel
- See T6 For Gravity Tilt
- Triple Axle on 24ft 8" Channel Only
- Max Length Full Tilt is 24'

\* denotes a standard feature



# MULTI<sup>↑</sup>DECK

BY PJ TRAILERS

# MT



**Lengths**  
20'

USA Patent No.: 7,534,083,B2  
Canadian Patent Application No.: 2,517,967

## Standard Features

- 14,000 lb. G.V.W.R.
- 7,000 lb. x 2 G.A.W.R.
- 2 5/16" Adjustable Ball Coupler
- Safety Chains
- 2 - Posi-lube Brake Axles (7,000 lb.)
- Torsion Suspension
- 4 - 16" White Spoke Wheels
- 4 - 235/80R16 Radial Tires (3,520 lb.)
- Electric Breakaway Kit w/ Charger
- 3" Channel Crossmembers 16" on Center
- 2" Treated Pine Lumber Deck
- DOT Approved Flushmount Lifetime LED Lights
- Sealed Wire Harness w/ 7-Way RV Plug
- Sand Blasted, Acid Washed, Powder Coated

## POWDER<sup>↑</sup> COATED

At PJ Trailers, every trailer we build is powder coated with Sherwin-Williams™ Powder Coat. A powder coat finish is far superior to conventional paint. It is extremely durable and does not easily crack, chip, or peel as conventional paint does. Powdercoating also helps prevent rust & corrosion making it the longest lasting and most durable finish on the market.

**Deck Height:**  
26" Lowered/35" Raised

**Deck Width:**  
82" Lowered/102" Raised

## Coupler Options

BP 2 5/16" Adjustable (14,000 lb.) \*  
BP 2 5/16" Adjustable Rigid Mount (25,000 lb.)

## Axle Options

(2) 7,000# Electric / Torsion \*

## Tail Options

Tilt Deck \*

## Color Options

Black Powdercoat \*  
Equipment Yellow Powdercoat  
Grey Powdercoat  
Red Powdercoat  
White Powdercoat

## Notes

Available in non-tilting equipment model

\* denotes a standard feature

## Weights

Length	Axles	Est. Base Weight:
20'	2 - 7,000	4640 lbs / 2105 kg

† Weights are estimated for base trailer only, PJ Trailers makes no guarantee regarding the accuracy of estimated weights

## About the MultiDeck Tilt

The patented MultiDeck Tilt by PJ Trailers is one of the most versatile trailers ever built. The trailer can be operated in a low equipment hauler position with a 26" deck height or a high position with a 35" deck height and 102" wide deck. This makes the trailer extremely useful for hauling both narrow or wide track equipment like skid steer and tractors, as well as palletized cargo.



Deck Tilted in Low Position



Deck Tilted in High Position



Low Deck Position



Low Deck Tilted Position



High Deck Position



High Deck Tilted Position



# Deckover Tilt (T8)

# T8



**Lengths**  
22' & 26'

**POWER UP  
& DOWN**

Bumper-pull 22 ft Deckover Tilt (T8) Pictured

## Standard Features

- 14,000 lb. G.V.W.R.
- 7,000 lb. x 2 G.A.W.R.
- 2 5/16" Adjustable Ball Coupler
- Safety Chains
- 1 - Drop Leg Jack (10,000 lb.)
- 2 - Posi-lube Brake Axles (7,000 lb.)
- 6 Leaf Slipper Spring Suspension
- 4 - 16" White Spoke Wheels
- 4 - 235/80R16 Radial Tires (3,520 lb.)
- Rubrail & Stake Pockets
- Electric Breakaway Kit w/ Charger
- DOT Reflective Tape
- 8" x 10 lb. I-Beam Tongue
- 8" x 10 lb. I-Beam Main Frame
- 2 x 6 x 1/8" Square Tubing Outer Deck Frame
- 3" Channel Crossmembers 16" on Center
- 22' Tilt Portion w/ 15 Degree Tilt Pitch
- 2" Treated Pine Lumber Deck
- 96" Wide Deck
- DOT Approved Flushmount Lifetime LED Lights
- Sealed Wire Harness
- 12VDC Hydraulic Pump
- 2 - 3" x 16" Hydraulic Cylinders
- 12' Control Cable
- Sand Blasted, Acid Washed, Powder Coated

**POWDER COATED**

At PJ Trailers, every trailer we build is powder coated with Sherwin-Williams™ Powder Coat. A powder coat finish is far superior to conventional paint. It is extremely durable and does not easily crack, chip, or peel as conventional paint does. Powdercoating also helps prevent rust & corrosion making it the longest lasting and most durable finish on the market.

## Weights

Length	Axles	Est. Base Weight†
22'	2 - 7,000	4320 lbs / 1960 kg
26'	2 - 7,000	4860 lbs / 2204 kg
28'	2 - 7,000	5140 lbs / 2331 kg

†Weights are estimated for base trailer only, PJ Trailers makes no guarantee regarding the accuracy of estimated weights

**TRAILER  
FLEX**

AIR RIDE SUSPENSION AVAILABLE



26 ft Grey Gooseneck Deckover Tilt (22' Tilt + 4' Stationary Deck)

## Coupler Options

- BP 2 5/16" Adjustable (14,000 lb.) \*
- Rigid mount 2-5/16 (25,000 lb.)
- GN 2 5/16" Round (30,000 lb.) w/ Toolbox
- GN Load-Leveling 2 5/16" Square (30,000 lb.) Tbx
- 3" Pintle Eye - Channel-mount (21,000 lb.)
- GN 2 5/16" Square (30,000 lb.) w/ Toolbox
- GN 2 5/16" Round (25,000 lb.) w/ Toolbox
- GN 2 5/16" Square (25,000 lb.) w/ Toolbox

## Axle Options

- (2) 7,000# Electric / Spring \*
- (2) 7,000# Electric / Torsion
- (2) 7,000# Elec/Hyd Disk / Spring
- (2) 7,000# Elec/Hyd Disk / Torsion
- (2) 7,000# Dexter Electric / Spring
- (2) 7,000# Dexter Electric / Torsion
- (2) 7,000# Load Range G 14ply Tires Elec/Spring
- (2) 8,000# Oil Bath Axles 235-80 Tires Elec/Spring
- (2) 8,000# Load Range G Tires Electric / Spring
- (2) 8,000# Load Range G Tires Elec/Hyd Disk/Sprg

## Tail Options

22' Tilt \*

## Other Options

- Mud Flaps Single Wheel Deckover
- Cold Weather Wiring Harness (7-Way RV)
- 1/4" Diamond Plate Steel Floor
- Side Steps
- Solar Battery Charger
- Plate for Winch
- 1x1 Angle Traction Bars on Rear of Deck
- 6" Taller GN Riser
- Douglas Fir Lumber
- Full Size Divided Toolbox Upgrade (BP Only)
- 9,990 G.V.W.R.
- Battery Charger 12V
- Frame Bridge
- 12" oc Crossmembers
- 1 Pair D-Rings
- Rough Oak Floor
- Weld-On Strap Ratchets (2)
- 2nd Jack (Bumper Pull)
- Under Frame Tie Down Flat
- 4" Ratchets every 4ft w/ Slide Track
- Mount Only for Spare Tire
- Hydraulic Jacks (12,000 lb.) Incl. Front Toolbox <sup>2</sup>
- 1 lga Diamond Plate Steel Floor & 4 D-Rings
- 102" Deck Width
- Scissor Lift
- Spare Tire and Mount (Bumper Pull)
- Deck on the Neck (GN Only)
- Side-mount Toolbox
- Winch 12VDC (12,000 lb.) Incl. Front Toolbox
- 2-speed Jacks (12,000 lb.)
- Spare Tire & Mount (Bumper Pull) G Rated
- Roller on Front of Deck for Winch Cable
- \* denotes a standard feature



# HD Deckover Tilt (T9)

# T9



**Lengths**  
24', 26', 28'  
& 30'

**POWER UP  
& DOWN**

28 ft HD Deckover Tilt (T9) Pictured

## Standard Features

- 15,680 lb. G.V.W.R.
- 7,000 lb. x 2 G.A.W.R.
- 2 5/16" GN Ball Coupler (25,000 • lb.)
- Safety Chains
- 2 - Drop Leg Jack (10,000 lb.)
- 2 - Posi-lube Brake Axles (7,000 lb.)
- 6 Leaf Slipper Spring Suspension
- 4 - 16" White Spoke Wheels
- 4 - 235/80R16 Radial Tires (3,520 lb.)
- Rubrail & Stake Pockets
- Electric Breakaway Kit w/ Charger
- DOT Reflective Tape
- 24' Tilt Portion w/ 17 Degree Tilt Pitch
- 3" Channel Crossmembers 16" on Center
- 2x6x1/8" Square Tubing Outer Deck Frame
- 2" Treated Pine Lumber Deck
- 12" x 14 lb. I-Beam Main Frame, Riser & Neck
- 102" Wide Deck
- 5" x 10.5" Hydraulic Cylinder w/Scissor Lift
- DOT Approved Flushmount Lifetime LED Lights
- Sealed Wire Harness w/ 7-Way RV Plug
- 12VDC Hydraulic Pump
- 12' Control Cable
- Sand Blasted, Acid Washed, Powder Coated
- Interstate (TM) Deep Cycle Battery

**POWDER COATED**

At PJ Trailers, every trailer we build is powder coated with Sherwin-Williams™ Powder Coat. A powder coat finish is far superior to conventional paint. It is extremely durable and does not easily crack, chip, or peel as conventional paint does. Powdercoating also helps prevent rust & corrosion making it the longest lasting and most durable finish on the market.

## Coupler Options

- GN 2 5/16" Round (25,000 lb.) w/ Toolbox \*
- BP 2 5/16" Adjustable Rigid Mount (25,000 lb.)
- GN 2 5/16" Round (30,000 lb.) w/ Toolbox
- GN Load-Leveling 2 5/16" Square (30,000 lb.)Tbx
- 3" Pintle Eye - Face-mount (36,000 lb.)
- GN 2 5/16" Square (30,000 lb.) w/ Toolbox
- GN 2 5/16" Square (25,000 lb.) w/ Toolbox

## Axle Options

- (2) 5,200# Electric / Spring
- (2) 7,000# Electric / Air Ride
- (2) 7,000# Electric / Spring \*
- (2) 7,000# Electric / Torsion
- (2) 7,000# Elec/Hyd Drum(1,000 PSI Pump)/Spring
- (2) 7,000# Elec/Hyd Disk(1,600 PSI Pump)/Air Ride
- (2) 7,000# Elec/Hyd Disk(1,600 PSI Pump)/Torsion
- (2) 7,000# Surge Disk / Spring
- (2) 7,000# Surge/ Hyd Drum w/Surge Cplr/Spring
- (2) 7,000# Dexter Electric / Spring
- (2) 7,000# Dexter Electric / Torsion
- (2) 7,000# Ld Range G 14ply Tires Electric / Spring
- (2) 7,000# Ld Range G 14ply Tires Electric / Torsion
- (2) 8,000# Oil Bath w/235-80 Tires Elec/Spring
- (2) 8,000# Oil Bath w/235-80 Tires Elec/Tors

-See dealer for more axle options

## Tail Options

22' Tilt \*

## Other Options

- Mud Flaps Single Wheel Deckover
- Cold Weather Wiring Harness (7-Way RV)
- 1/4" Diamond Plate Steel Floor
- Side Steps
- Solar Battery Charger
- late for Winch
- 1 x 1 Angle Traction Bars on Rear of Deck
- 6" Taller GN Riser
- Douglas Fir Lumber
- Full Size Divided Toolbox Upgrade (BP Only)
- 9,990 G.V.W.R.
- Battery Charger 12V
- Frame Bridge
- 12"oc Crossmembers
- 1 Pair D-Rings
- Rough Oak Floor
- Weld-On Strap Ratchets (2)
- Under Frame Tie Down Flat
- 4" Ratchets every 4ft w/ Slide Track
- Hydraulic Jacks (12,000 lb.) Incl. Front Toolbox <sup>2</sup>
- 1 lga Diamond Plate Steel Floor & 4 D-Rings
- Deck on the Neck (GN Only)
- Side-mount Toolbox
- Winch 12VDC (12,000 lb.) Incl. Front Toolbox
- 2-speed Jacks (12,000 lb.)
- Roller on Front of Deck for Winch Cable

\* denotes a standard feature

## Weights

Length	Axles	Est. Base Weight;
28'	2 - 7,000	6450 lbs / 2926 kg

† Weights are estimated for base trailer only, PJ Trailers makes no guarantee regarding the accuracy of estimated weights

**TRAILER  
FLEX**

AIR RIDE SUSPENSION AVAILABLE



# Tandem Dual Tilt (TD)

# TD



**Lengths**  
24' - 40'

**POWER UP  
& DOWN**

Gooseneck 30 ft Tandem Dual Tilt (TD) Pictured

## Standard Features

- 22,400 lb. G.V.W.R.
- 10,000 lb. x 2 G.A.W.R.
- 2 5/16" Gooseneck Ball Coupler (25,000 lb.)
- Safety Chains
- 2 - Dropleg Jacks (10,000 lb.)
- 2 - Oil Bath Axles (10,000 lb.)
- Torsion Suspension
- 8 - 16" Grey DualWheels w/ 8 on 6.5" Bolt Pattern
- 8 - 16" 235/80R16 Radial Tires (3,090 lb.)
- Rubrail & Stake Pockets
- Electric Breakaway Kit w/ Charger
- DOT Reflective Tape
- Side Steps on Both Sides
- Front Toolbox (GN Only)
- Self-rising Bumper
- 24' Tilt Portion w/ 15 Degree Tilt Pitch
- 12VDC Hydraulic Pump
- Scissor Lift
- 12" x 19 lb. I-Beam Frame, Riser & Neck
- 8" x 15 lb. I-lb. Deck Frame
- 3" Channel Crossmembers 16" on Center
- 2 x 6 x 1/8" Square Tubing Outer Deck Frame
- Frame Bridging
- 2" Treated Pine Lumber Deck
- 102" Wide Deck
- DOT Flushmount Lifetime LED Lights
- Sealed Wire Harness
- Sand Blasted, Acid Washed, Powder Coated

**POWDER COATED**

At PJ Trailers, every trailer we build is powder coated with Sherwin-Williams™ Powder Coat. A powder coat finish is far superior to conventional paint. It is extremely durable and does not easily crack, chip, or peel as conventional paint does. Powdercoating also helps prevent rust & corrosion making it the longest lasting and most durable finish on the market.

## Coupler Options

- GN 2 5/16" Round (25,000 lb.) \*
- GN 2 5/16" Round (30,000 lb.)
- GN Load-Leveling 2 5/16" Square (30,000 lb.)
- 3" Pintle Eye - Face-mount (36,000 lb.)
- GN 2 5/16" Square (30,000 lb.)
- GN 2 5/16" Square (25,000 lb.)

## Axle Options

- (2) 10,000# Elec / Spring
- (2) 10,000# Elec / Torsion \*
- (2) 10,000# Elec/Spring w/ Single 17.5 Tires Elec / Spring
- (2) 10,000# Elec/Spring w/ Single 17.5 Tires Elec / Torsion
- (2) 12,000# Elec / Spring
- (2) 12,000# Elec/Hyd Disk / Spring

## Tail Options

24' Tilt Deck \*

## Color Options

Black Powdercoat \*  
Equipment Yellow Powdercoat  
Grey Powdercoat  
Red Powdercoat  
White Powdercoat

## Other Options

Cold Weather Wiring Harness (7-Way RV)  
AL-KO Axles 10k Electric/Spring only <sup>2</sup>  
Dexter Axles 10k Electric/Spring only <sup>2</sup>  
Plate for Winch  
6" Taller GN Riser  
Douglas Fir Lumber  
Battery Charger 12V  
12" oc Crossmembers  
1 Pair D-Rings  
Rough Oak Floor  
Weld-On Strap Ratchets (2)  
Hydraulic Jacks (12,000 lb.) Incl. Front Toolbox <sup>2</sup>  
Goodyear G Rated Tires  
4" Ratchets every 4ft w/ Slide Track  
6" Axle Spread (Longer Equalizer)  
Front Toolbox (PH Only)  
Deck on the Neck 8x8 ft  
Side-mount Toolbox  
Winch 12VDC (12,000 lb.) Incl. Front Toolbox  
2-speed Jacks (12,000 lb.)  
HD Semi Trailer 2x Jacks (25k lb.) No Frt T/box  
Roller on Front of Deck for Winch Cable

\* denotes a standard feature

## Weights

Length	Axles	Est. Base Weight <sup>†</sup>
24'	2 - 10,000	7580 lbs / 3438 kg
26'	2 - 10,000	7830 lbs / 3552 kg
28'	2 - 10,000	8080 lbs / 3665 kg
30'	2 - 10,000	8330 lbs / 3778 kg
32'	2 - 10,000	8580 lbs / 3892 kg
34'	2 - 10,000	8830 lbs / 4005 kg
36'	2 - 10,000	9080 lbs / 4119 kg
38'	2 - 10,000	9330 lbs / 4232 kg
40'	2 - 10,000	9600 lbs / 4354 kg

<sup>†</sup> Weights are estimated for base trailer only, PJ Trailers makes no guarantee regarding the accuracy of estimated weights

**TRAILER  
FLEX**

AIR RIDE SUSPENSION AVAILABLE

# Tilt Options Guide

(some options not shown, please view the product page for a list of all options)

## Coupler Options



Bumper Pull



3" Pintle Eye



8" I-Beam Gooseneck

## Color Options



Black Powder Coat



Eq. Yellow Powder Coat



Grey Powder Coat



White Powder Coat



Red Powder Coat

(actual color may vary)

## Other Options



Rough Oak Floor



Rubrail



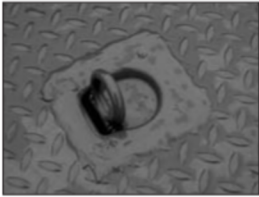
Winch 12VDC (12,000 lb.)



Deck on the Neck (GN Only)



Spare Tire Mount



Steel Floor & 4 D-Rings



1 Pair D-Rings



Winch Cable Roller



12" oc Crossmembers



Sliding Strap Ratchets



Weld On Strap Ratchets (2)



Side-Mount Toolbox



2 Speed Jacks



Winch Plate



**TRAILER FLEX** TrailerFlex Air Ride Suspension



Full Size Divided Toolbox Upgrade (T8 & T9)



Cold Weather Wiring Harness (7-Way RV)



1x1 Angle Traction Bars on Rear of Deck (T8, T9, & TD)



Pallet Fork Holders (T6 & TF)



## PJ TRAILERS

- #1 Professional Grade Open Trailer Manufacturer
- Broad Line of Dumps, Flatdecks, Utilities, Tilts & Equipment Trailers
- Over 300 Independent PJ Trailers Dealer Locations in the US & Canada

Visit Us Online at [www.pjtrailers.com](http://www.pjtrailers.com)

