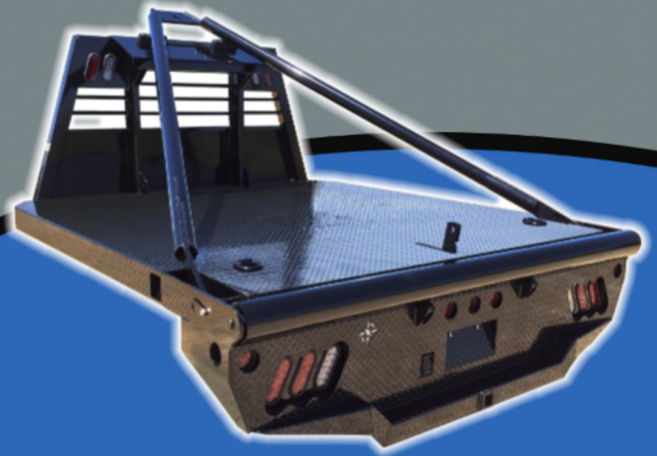
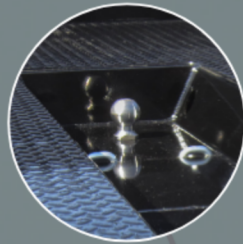


# norstar





# WH Skirted Smooth Side w/4 Tool Boxes, Stake Pockets & Rub Rail



Gooseneck Ball Mount



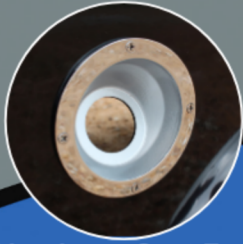
7-Way Plug In Trough



4 Recessed D-Rings



18" Gooseneck Trough



Aluminum Cast Fuel Fillers Angled



4 Side Tool Boxes w/Chrome Hinges



LED Stop, Tail, Turn and Reverse Lights



Receiver Hitch



Aluminum Cast License Plate Housing

Length	Width	Cab To Axle
84"	80"	38", 40", 42"
84"	97"	38", 40", 42"
8'-6"	80"	56", 58"
8'-6"	94"	56", 58"
8'-6"	97"	56", 58"
9'-4"	80"	60"
9'-4"	92"	60"
9'-4"	94"	60"
9'-4"	97"	60"
11'-4"	94"	84"
11'-4"	97"	84"

## Standard Features

- Steel Structural Frame
- 4" Runner Channels (Adjustable on 56" CTA Only)
- Formed 3 x 3/16" Channel Cross Members
- Dove Tail
- Steel Tube Head Rack w/Cross Bars, Tail & Rev. Lights
- Premium Powder Coated Black
- Steel 1/8" Diamond Plate Floor
- Chrome Accent Lighting
- Built in Gooseneck Well w/Ball Mounted & Diam Plate Lid
- 2.5" LED Reflective Marker Lights
- Polished Stainless Smooth Flare Fenders
- 4/5 & 7 Way Receiver Female Plug w/Adaptor
- Single LED License Plate Light
- Aluminum Trim package
- All Lighting DOT Approved
- Aluminum Cast Tail Light Housing
- Molded Sealed Harness w/ Resistors